



USING ABSOLUTE BLACK INKS FOR MAKING SCREEN POSITIVES ON THE EPSON STYLUS PRO 7700, 7890, 7900, 9700, 9890, & 9900

The following instructions explain how the i2i Absolute Black ink for making screen positives is installed on an Epson Stylus Pro 7770, 7890, 7900, 9700, 9890, and 9900. The Absolute Black ink can be installed in one or multiple cartridges on the printer, can be used alongside full color inks for regular color printing, or can be used in combination with our Absolute Clear inks for the non-active channels on a dedicated screen positive printing machine. The choice of which combination of inks to use is not discussed in these instructions. If you need guidance on the best combination of inks to use for your application, then please refer to the 'Absolute Black buying guide' on our website, or call 847-827-0747.

If you intend to use the Absolute Black inks in every channel of your machine, or in combination with the Absolute Clear inks, then it is best to turn off the 'Auto Nozzle Check' feature on your printer. The auto nozzle check only works with normal full color inks. To turn off the auto nozzle check, go to the menu on the printer display and select 'Printer Set Up' and then 'Auto Nozzle Check'. Set the auto nozzle check to off.

The Absolute Black inks, Absolute Clear inks, and Cave Paint Elite full color pigment inks are supplied in pre-filled 350 ml size cartridges, or in bulk bottles for use with our refillable cartridges. The installation method for pre-filled cartridges is explained first below. If you are going to install refillable cartridges and bulk inks then proceed to the next section.

INSTALLING PRE-FILLED CARTRIDGES

Installing on a brand new printer that has never been used with inks before, or on a printer that has been flushed with cleaning fluid.

Simply install the cartridges in the printer and follow the instructions on the display. The machine should automatically perform an 'initial fill' routine immediately after installing the cartridges to fill the ink system with inks. If the printer does not automatically start this fill process then see the 'Running an initial fill routine' below. When the machine has finished the initial fill routine (indicated by 'Ready' showing on the display), perform a manual nozzle check print on plain paper using the driver software utility to check that all jets are firing on the print heads you intend to use for printing. If you are installing Absolute Black in the black channel only and Absolute Clear in all the other channels, then the nozzle check print will show the black print head only – this is fine. If the nozzle check print shows that some jets are not firing then perform manual cleaning cycles (not auto cleaning) and nozzle check prints until you get a good print. You are now ready to start printing.

Installing Absolute Black ink in the black channel only on a printer that has Epson original black ink installed, and is going to be used alongside Epson original inks, Absolute Clear inks, or Cave Paint Elite Enhanced color inks in the other cartridges.

The Absolute Black ink is mixable with the original Epson black pigment ink (Photo Black or Matte Black) but we recommend purging the ink through to the print head to eliminate any strange printing effect that can be caused by a mixture of the two inks. This can easily be done by running an 'initial fill' routine on the printer. Unfortunately, Epson printers do not have a built in routine to purge ink through the black channel only so

running the 'initial fill' routine will purge through all the channels on the machine. Because of this, all the other cartridges installed on the machine will need at least 25% ink remaining in them (excluding the black cartridge that you are about to change). You will also need at least 25% capacity left in the maintenance tank. Install the pre-filled Absolute Black cartridge in the black channel, and original Epson cartridges, Absolute Clear cartridges, or Cave Paint Elite Enhanced pigment ink cartridges in the other channels. Run the initial fill routine (see instructions below) and then perform a manual nozzle check print on plain paper using the driver software utility to check that all jets are firing on the print heads you intend to use for printing. If you are installing Absolute Black in the black channel only and Absolute Clear in all the other channels, then the nozzle check print will show the black print head only – this is fine. If the nozzle check print shows that some jets are not firing then perform manual cleaning cycles (not auto cleaning) and nozzle check prints until you get a good print. You are now ready to start printing.

Installing Absolute Clear inks, or Cave Paint Elite Enhanced color inks on a printer that has the Epson original ink installed.

Simply install the cartridges as the existing cartridges run empty. Both the Absolute Clear ink and the Cave Paint Elite Enhanced inks are freely mixable with the Epson original inks, so no cleaning or purging is required.

Installing Absolute Black ink in every channel on a printer that is using Epson original pigment inks.

We strongly recommend that a printer running existing Epson inks should be flushed out before installing the Absolute Black ink in every channel on the machine, and Ink2image supplies cleaning cartridges for this purpose. Failure to do so can result in bad printed output or nozzle clogging. To flush out a printer and install the Absolute Black cartridges in every channel, you will need at least 50% capacity left in the maintenance tank. To flush the machine, install cleaning cartridges in every channel. Run the initial fill routine (see instructions below) and then ideally leave the printer to 'soak' overnight if possible to allow the cleaning fluid to dissolve any dried ink deposits in the ink system. Install the Absolute Black cartridges in every channel. Run another initial fill routine and then perform a manual nozzle check print on plain paper using the driver software utility to check that all jets are firing. If the nozzle check print shows that some jets are not firing then perform manual cleaning cycles (not auto cleaning) and nozzle check prints until you get a good print. You are now ready to start printing. The cleaning cartridges are good for another three flushes, so keep them for re-use in case you ever want to use the machine for full color printing again.

RUNNING AN INITIAL FILL ROUTINE

The printer has a handy initial fill routine built into the firmware that fills the machine's ink system with inks or cleaning fluid. The routine is very simple to set and use. You should always bear in mind that the maintenance tank will need at least 25% capacity remaining in order to run the routine. If the maintenance tank is nearly full then the printer will not allow you to run the initial fill, and an empty tank will need to be installed before the routine can be performed.

Install the cartridges in the machine that you want to use and then turn the printer off. You will now power up the machine in service mode.

1. Press and hold down the "Down" arrow, "Right" arrow, and "OK" buttons and then press the power on button.
2. After the printer powers up, release the "Down", "Right" and "Enter" buttons. Display will look like normal.

3. Press the “right” arrow button to enter the service mode menu.
4. Using the “Down” button to navigate to the “Cleaning” menu, and press the “Right” button.
5. Using the “Down” button, navigate to the “Init. Fill” menu, and press the “Right” button.
6. Press the “OK” button to start the initial fill routine.

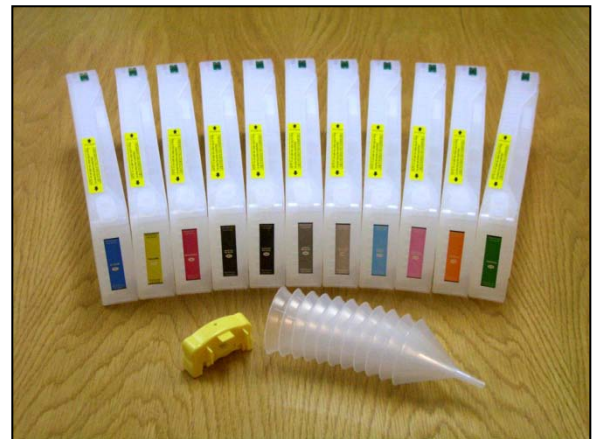
The initial fill routine takes about 10 minutes. When the routine has finished, the display will read ‘ready’. To return the machine to normal operating mode, power off and then wait 10 seconds before powering back on, The printer will now start up in normal mode.

INSTALLING REFILLABLE CARTRIDGES

Refillable cartridges are designed for use with bulk inks supplied in bottles, and offer considerable savings over single use pre-filled cartridges. Refillable cartridges can be purchased individually, but are generally supplied in starter kits that include an initial supply of ink. Ink2image refillable cartridges are simple to install, easy to use, and will provide you with many hours of trouble free and lower cost printing. However, the successful use of the system is dependent on how accurately you follow this guide during installation. Please read these instructions and familiarize yourself with the system components before you start the installation. Please also remember that you are now about to start working with bulk ink instead of sealed cartridges. During installation, protect the area around your printer in case of ink spillage and wear the disposable gloves included with the kit. Have a roll of paper towel handy. Remember, accidents can happen!

SYSTEM COMPONENTS

1. Refillable Cartridges (5 for the 7700/9700, 9 for the 7890/9890, 11 for the 7900/9900)
2. Disposable gloves.
3. Chip resetter.
4. 10 ml priming syringe with end adaptor.
5. Filling funnels.
6. Instruction CD.
7. 30 ml pressure test syringe with yellow end adaptor.



The method of installing refillable cartridges is different than with pre-filled single use cartridges. Firstly, the cartridges are supplied empty and you will need to fill them. Secondly, the first time you fill a refillable cartridge, the cartridge will need to be primed using the included syringe to remove a small amount of air from an ink channel in the front of the cartridge, However, this priming is not necessary if you are going to run an initial fill routine during installation – see options below. Thirdly, refillable cartridges can be used with cleaning fluid prior to filling them with ink if flushing of the printer is required before installing the Absolute Black inks – see options below. The details on filling and priming refillable cartridges are included in the next section of these instructions. Read the section below for specific instructions on the ink set up that you intend to use.

Installing refillable cartridges on a brand new printer that has never been used with inks before, or on a printer that has been flushed with cleaning fluid.

Simply fill and install all the refillable cartridges (without priming) in the printer and follow the instructions on the display. The machine should automatically perform an 'initial fill' routine immediately after installing the cartridges to fill the ink system with inks. If the printer does not automatically start this fill process then see the 'Running an initial fill routine' below. When the machine has finished the initial fill routine (indicated by 'Ready' showing on the display), perform a manual nozzle check print on plain paper using the driver software utility to check that all jets are firing on the print heads you intend to use for printing. If you are installing Absolute Black in the black channel only and Absolute Clear in all the other channels, then the nozzle check print will show the black print head only – this is fine. If the nozzle check print shows that some jets are not firing then perform manual cleaning cycles (not auto cleaning) and nozzle check prints until you get a good print. You are now ready to start printing.

Installing a refillable cartridge and Absolute Black ink in the black channel only on a printer that has Epson original black ink installed, and is going to be used alongside Epson original inks, Absolute Clear inks, or Cave Paint Elite Enhanced color inks in pre-filled single use cartridges.

The Absolute Black ink is mixable with the original Epson black pigment ink (Photo Black or Matte Black) but we recommend purging the ink through to the print head to eliminate any strange printing effect that can be caused by a mixture of the two inks. This can easily be done by running an 'initial fill' routine on the printer. Unfortunately, Epson printers do not have a built in routine to purge ink through the black channel only so running the 'initial fill' routine will purge through all the channels on the machine. Because of this, all the cartridges installed on the machine will need at least 25% ink remaining in them (excluding the black cartridge that you are about to change). You will also need at least 25% capacity left in the maintenance tank. Install the refillable cartridge filled with Absolute Black ink in the black channel (no priming required), and original Epson cartridges, Absolute Clear cartridges (single use or refillable), or Cave Paint Elite Enhanced pigment ink cartridges (single use or refillable) in the other channels. Run the initial fill routine (see instructions below) and then perform a manual nozzle check print on plain paper using the driver software utility to check that all jets are firing on the print heads you intend to use for printing. If you are installing Absolute Black in the black channel only and Absolute Clear in all the other channels, then the nozzle check print will show the black print head only – this is fine. If the nozzle check print shows that some jets are not firing then perform manual cleaning cycles (not auto cleaning) and nozzle check prints until you get a good print. You are now ready to start printing.

Installing refillable cartridges using Absolute Clear inks, or Cave Paint Elite Enhanced color inks on a printer that has the Epson original ink installed.

Simply install the refillable cartridges as the existing cartridges run empty. Each refillable cartridge will need priming with the included syringe (see instructions below). Both the Absolute Clear ink and the Cave Paint Elite Enhanced inks are freely mixable with the Epson original inks, so no cleaning or purging is required.

Installing refillable cartridges and Absolute Black ink in every channel on a printer that is using Epson original pigment inks.

We strongly recommend that a printer running existing Epson inks should be flushed out before installing the Absolute Black ink in every channel on the machine. Ink2image supplies cleaning fluid in bulk for use in refillable cartridges for this purpose. Failure to do so can result in bad printed output or nozzle clogging. To flush out a printer and install the Absolute Black inks in every channel, you will need at least 50% capacity left

in the maintenance tank. To flush the machine, fill each refillable cartridge with around 1” of cleaning fluid (no cartridge priming required) and install the cartridges in every channel. Run the initial fill routine (See instructions below) and then ideally leave the printer to ‘soak’ overnight if possible to allow the cleaning fluid to dissolve any dried ink deposits in the ink system. Empty any cleaning fluid remaining in the refillable cartridges by pouring it out through the filling hole and back into the cleaning fluid bottle, and fill all the cartridges with Absolute Black ink (no cartridge priming required). Install the Absolute Black cartridges in every channel. Run another initial fill routine and then perform a manual nozzle check print on plain paper using the driver software utility to check that all jets are firing. If the nozzle check print shows that some jets are not firing then perform manual cleaning cycles (not auto cleaning) and nozzle check prints until you get a good print. You are now ready to start printing.

RUNNING AN INITIAL FILL ROUTINE

The printer has a handy initial fill routine built into the firmware that fills the machine’s ink system with inks or cleaning fluid. The routine is very simple to set and use. You should always bear in mind that the maintenance tank will need at least 25% capacity remaining in order to run the routine. If the maintenance tank is nearly full then the printer will not allow you to run the initial fill, and an empty tank will need to be installed before the routine can be performed.

Install the cartridges in the machine that you want to use and then turn the printer off. You will now power up the machine in service mode.

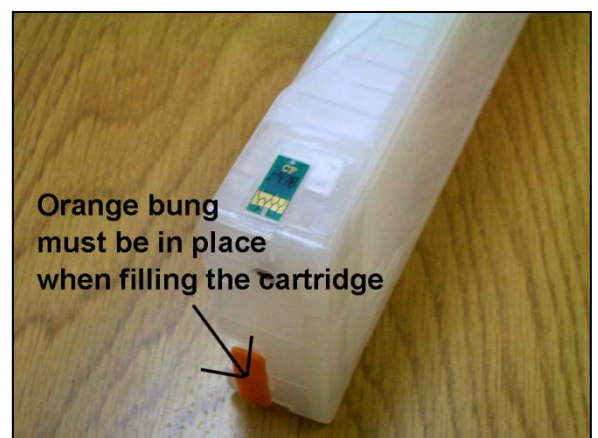
7. Press and hold down the “Down” arrow, “Right” arrow, and “OK” buttons and then press the power on button.
8. After the printer powers up, release the “Down”, “Right” and “Enter” buttons. Display will look like normal.
9. Press the “right” arrow button to enter the service mode menu.
10. Using the “Down” button to navigate to the “Cleaning” menu, and press the “Right” button.
11. Using the “Down” button, navigate to the “Init. Fill” menu, and press the “Right” button.
12. Press the “OK” button to start the initial fill routine.

The initial fill routine takes about 10 minutes. When the routine has finished, the display will read ‘ready’. To return the machine to normal operating mode, power off and then wait 10 seconds before powering back on, the printer will now start up in normal mode.

FILLING REFILLABLE CARTRIDGES

Avoid touching the chips on the cartridges during the filling process, and avoid tipping the cartridges over – always try and keep the cartridges in the same horizontal position that they are when installed in the printer.

Firstly, familiarize yourself with the orange rubber stopper on the back surface of each cartridge. This stopper covers the air pressurization port on the cartridges, and the stopper must be in place during cartridge filling/refilling. This is very important as



filling a cartridge without the stopper in place can result in ink getting into the air pressure system on the printer.

Fill the cartridges that you are going to install at this point. To do this, place each cartridge on a flat surface. If you are concerned about spilling ink then place a few layers of paper towel under the cartridge. Remove the bung from the ink filling hole on top of the cartridge. Place a clean filling funnel into the filling hole, as in the picture below. Before pouring ink into the cartridge, double check that you are filling the correct color cartridge with the correct ink color. Slowly pour ink into the funnel and fill the cartridge to within 1" (2 cm) of the top (see max fill mark on label). Remove the funnel and put the bung back into the filling hole. Wash out the funnel with water under a faucet, dry the funnel with paper towel, and store in a clean, safe place for use the next time you need to refill. Always keep your cartridges upright and level after filling (as in the picture above) and avoid tipping them up or over – this can introduce ink into the printer air system. Repeat the filling process with each cartridge in turn using a clean funnel for each cartridge and ensuring you fill the correct color ink into the correct color cartridge.



It is advisable to perform a quick pressure test on a refillable cartridge after every refill to test the integrity of the cartridge's internal damper system.

To perform the test, remove the orange stopper from the air pressure connector. Take a 30 ml syringe with yellow end adaptor fitted and push the yellow adaptor over the air pressure connection nipple, as in this picture.

Draw the syringe plunger all the way out to remove 30 ml or so of air from the cartridge. Hold the plunger fully out for a few seconds. If no ink appears in the syringe then the cartridge is good. The syringe with adaptor can be removed from the nipple, and the orange stopper can be replaced on the air pressure connector.



If any ink appears in the syringe during the pressure test, then the cartridge is faulty and should not be installed in a printer. The ink in the cartridge can be saved by pouring it out through the cartridge filling hole. Replacement cartridges are available from the supplier where the kit was purchased.

PRIMING CARTRIDGES INDIVIDUALLY

If you are installing refillable cartridges one at a time so existing standard cartridges can be used up, you will need to extract a small amount of air from each refillable cartridge that gets trapped during the initial filling process before you first install the cartridge in the printer. Failure to do this will mean that this trapped air will eventually make its way to the print head and cause some nozzle drop outs during printing. Several cleaning cycles would be needed to remove this air if this happens.

Finally, remove the bung from the ink filling hole on top of the cartridge. Place a clean filling funnel into the filling hole, as in this picture. Before pouring ink into the cartridge, double check that you are filling the correct color cartridge with the correct ink color. Slowly pour ink into the funnel and fill the cartridge to within 1" (2 cm) of the top. Remove the funnel and put the bung back into the filling hole. Wash out the funnel with water under a faucet, dry the funnel with paper towel, and store in a clean, safe place for use the next time you need to refill. **After refilling, it advisable to perform the pressure test, as described in step 3 above.**



Re-install the filled cartridge back into the printer remembering to remove the orange stopper from the air port before you insert the cartridge into the printer. **If you notice any ink dripping from the air port at this point then the cartridge is faulty and should not be installed in the printer – please contact your supplier if this happens.** Repeat the refilling process with each cartridge in turn using a clean funnel for each cartridge and ensuring you fill the correct color ink into the correct color cartridge.

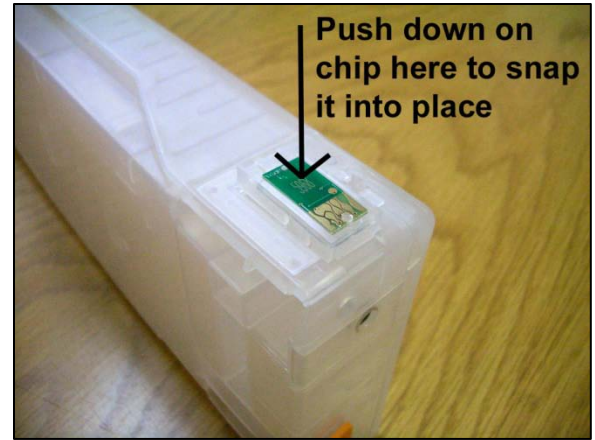
CHANGING A CHIP ON A CARTRIDGE

Cartridge chips do not have an infinite life and will fail periodically. You can prolong chip life by avoiding touching the gold contact on the chips. A chip failure is indicated by either the chip resetter's light remaining red during the resetting process, or by the cartridge not being recognized by the printer after resetting. The refillable cartridge kit includes a spare set of cartridge chips and they are very simple to change.

To change a cartridge chip, a small flat blade screwdriver is required. Insert the screwdriver into the small slot beside the chip, and gently lever the chip assembly up and away from the cartridge, as in these two pictures below.



To install the new chip, simply line up the chip assembly over the recess in the cartridge and push down on the green area of the chip to snap the new assembly into place. Try to avoid touching the gold contacts on the chip during this operation. When the chip assembly is located properly, it will be flush with the top surface of the cartridge. The cartridge can now be inserted into the printer again – new chips do not normally need to be reset. After a chip has been changed, it is wise to purchase a new spare chip from your supplier.



USER TIPS

The use of an Ink2image refillable cartridge system is very simple to use as long as you remember these important points:-

1. Top up the cartridges regularly with ink. Be aware that certain colors will be used more quickly than others depending on what type of printing you do. For instance, the black ink will be used quicker than the other cartridges if you are printing screen positives using the black cartridge only. Or, if your ink set up also allows you to print full color images, then the light colors will also run down quickly. Never let the ink levels drop below 1" from the bottom of the cartridge and don't fill higher than 1" from the top of cartridge.
2. If you do accidentally let a cartridge run dry, refill and prime the cartridge as described above.
3. When you have finished printing, always turn your printer off.
4. Always try and use your printer at least once a week, even if you only print one small print. This will keep the ink fresh in the printer's print heads and reduce the chance of clogging or drying out of the inks. If you are not going to use your printer for more than four weeks, then we recommend removing the cartridges and flushing the printer with cleaning cartridges or, if you are using refillable cartridges, then fill the cartridges with cleaning fluid and perform an initial fill routine.

Apart from these points, you should use your printer just as you would with normal cartridges and, as long as you follow these simple guidelines, you will enjoy trouble free and cost saving printing.

If you require technical assistance or support with any Ink2image products, please initially contact the store or dealer where the system was purchased. All Ink2image dealers are well trained in the operation of the system and can help with most problems. Alternatively, contact Ink2image technical support on 1-800-443-9508 or 847-827-0747 or at inquiries@ink2image.com.

30 DAY GUARANTEE TO REPLACE DEFECTIVE PARTS

Ink2image guarantees all parts are defect-free for a period of 30 days from the date that you receive your new Ink2image refillable cartridge system. If you have received a defective part, please initially contact the retailer or dealer from where the system was purchased.

DISCLAIMER

Because Ink2image refillable cartridges are self installed by the user, Ink2image is not responsible for any damages to your printer, whether they are or are not related to the Ink2image refillable cartridge system. Please contact the store or dealer where the printer was purchased, or the printer manufacturer for any problems or questions related to the printer and its operation.

If the Customer chooses to use ink in the system from another manufacturer other than Ink2image, and is not satisfied with the ink, or it clogs the printer or the bulk feed system, it will be the Customers responsibility to pay for the parts to repair the system and restore it to normal usage. We can only guarantee that the Ink2image refillable cartridge system will deliver Ink2image ink just as well as a normal ink cartridge. We will not accept returns of used systems, or systems filled with third party ink that the customer later decides does not meet their specific needs.