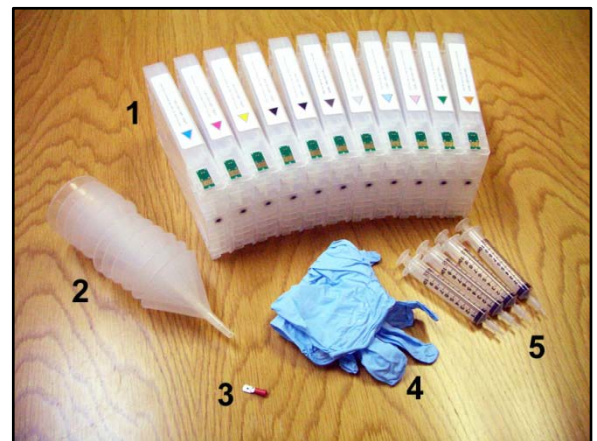


Thank you for purchasing an Ink2image bulk ink feed system. You have just taken the first step to enjoying the cost saving and superior performance benefits of using Ink2image bulk ink. Ink2image bulk ink feed systems are simple to install, easy to use, and will provide you with many hours of trouble free and lower cost printing. However, the successful use of the system is dependent on how accurately you follow this guide during installation. Please read these instructions and familiarize yourself with the system components before you start the installation. Please also remember that you are now about to start working with bulk ink instead of sealed cartridges. During installation, protect the area around your printer in case of ink spillage and wear the disposable gloves included with the kit. Have a roll of paper towel handy. Remember, accidents can happen!

SYSTEM COMPONENTS

1. Refillable Cartridges (11).
2. Filling funnels.
3. Chip resetting tool.
4. Rubber gloves.
5. 10 ml syringe with end adaptor.



STEP 1

Before starting the installation, print a good nozzle check print using the existing inks installed on your printer. Write the date on the print and keep it. No warranty claim regarding the bulk ink feed system will be accepted unless it is supported by a good nozzle check print produced before the system was installed. The utility for producing a nozzle check print can be found under the 'Maintenance' or 'Utilities' tab of the Epson print driver software supplied with your printer.

STEP 2

If you are currently using original Epson Ultrachrome K3 Vivid HDR inks in the printer and are about to install Cave Paint Elite Enhanced inks then proceed to step 3. If you are currently using a different ink type, or intend to install a different Ink2image ink than mentioned above, it is a good idea to flush out your printer before installing the system. Otherwise, you will waste a lot of time and ink purging through one ink type to another, or potentially clog your printer. Ink2image supplies cleaning fluid for the purpose of flushing the printer and this can be obtained from your local Ink2image supplier.

If you are in doubt about the need to flush your printer, then contact your local supplier or e-mail Ink2image at inquiries@ink2image.com. Ink2image will not be held responsible for problems caused by the incompatibility of different ink types.

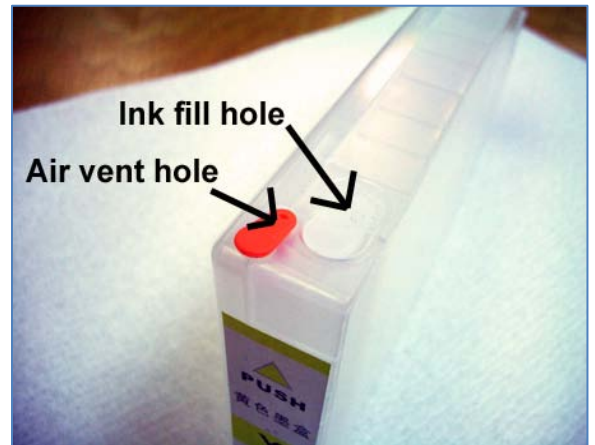
STEP 3 – FILLING THE CARTRIDGES

Avoid touching the chips on the cartridges during the filling process, and avoid tipping the cartridges over.

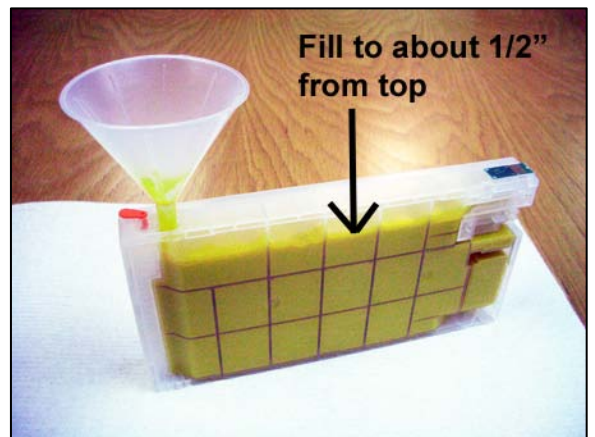
Stand a cartridge upright on some paper towel. Familiarize yourself with the two rubber bungs and holes on the top surface. The white rubber is in the ink filling hole – this bung should always be in place when the cartridge is installed in the printer, and should only be removed when you are refilling a cartridge. The smaller rubber bung is in the air vent hole – this bung should always be removed when the cartridge is installed in the printer, and should only be in place when you are refilling a cartridge.

The only time you should have this bung in place when the cartridge is installed in the printer is if you intend to not use your machine for an extended period – inserting the bung will stop any ink evaporation during extended periods of non-use.

To fill a cartridge, remove the bung from the ink fill hole and insert a clean funnel into the hole as in this picture.

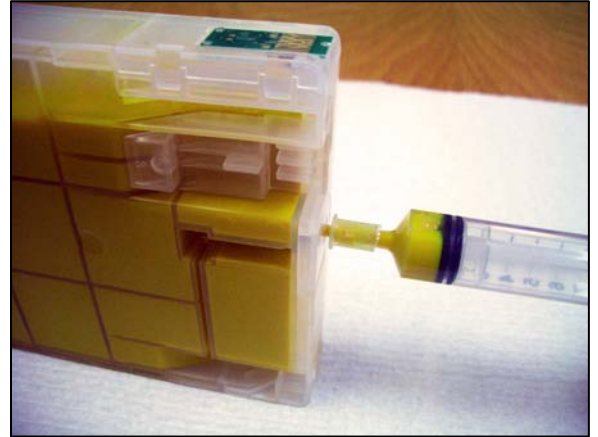


Take an ink bottle of the appropriate color and gently start to pour the ink into the funnel. Double check you are using the correct ink color for the cartridge you are filling. As the ink level nears the top of the cartridge, slow down the pour rate and stop filling when the ink about 1/2" from the top of the cartridge. There is no point in trying to fill the cartridge more than this level – you will be in danger of overflowing the cartridge and making a big mess! If you notice that there is a lot of foam being created on top of the ink that prevents you filling the ink up to the neck of the cartridge, you may have to let the cartridge stand until the foam disperses before you can continue refilling with ink.



Remove the funnel from the cartridge and insert the rubber bung firmly back into the filling hole. Clean the funnel using water under a faucet, and store in a clean place ready for when the cartridge needs refilling again.

Remove the bung from the air vent hole. Gently insert a 10 ml syringe with end adaptor fitted into the ink exit port. Pull on the syringe plunger until you get a steady flow of bubble free ink into the syringe, as in this picture. Ink in the syringe may be returned to the bottle of the appropriate ink color. After you have removed the air from the ink port, the cartridge is ready for use, and the syringe and adaptor should be cleaned out with water under a faucet. Keep the syringe in a safe clean place ready for use the next time you refill a cartridge. Removal of the air from the ink exit port is only necessary the first time that you fill a cartridge or if you let a cartridge run dry during printing. When you refill a cartridge normally, some ink will remain in the bottom of the cartridge and so it is not necessary to remove the air from the ink exit port.



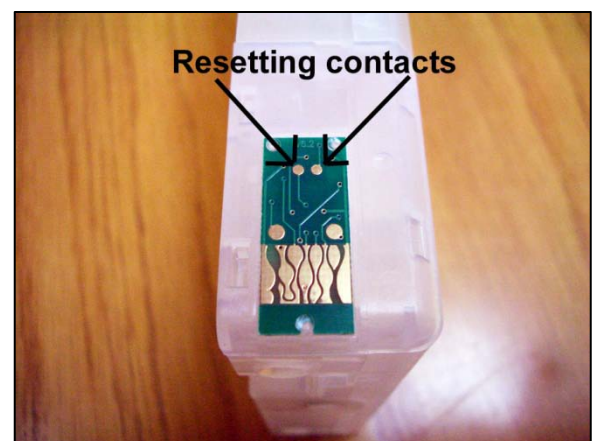
Repeat the filling process with each cartridge in turn using a clean funnel for each cartridge and ensuring you fill the correct color ink into the correct color cartridge. Always use a clean syringe when removing the air from the ink exit port to ensure that no cross contamination of inks occurs.

Install the cartridges in the printer in exactly the same way as regular cartridges. The ink levels should show full on the printer display. It is OK use refillable cartridges alongside regular cartridges.

REFILLING THE CARTRIDGES AND RESETTING THE CHIPS

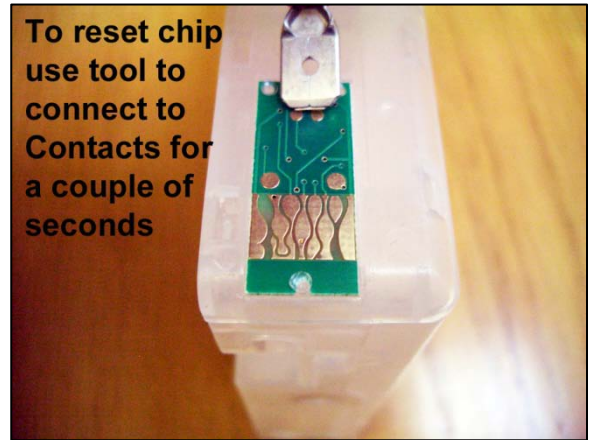
Cartridges should be refilled when the ink levels on the printer display show more than 10% remaining to ensure that a cartridge doesn't run dry. It is best to work on one cartridge at a time to reduce the risk of putting the wrong color ink in the wrong color cartridge. The method to refill a cartridge is explained in step 3 above. The only difference is that the cartridge ink monitor chip will need resetting to full after refilling.

Resetting a cartridge chip is very simple. The cartridge chip has two small gold contacts – see this picture. To reset the chip, hold the resetting tool on the chip to make a connection between the two gold contacts for a couple of seconds. If you lose the resetting tool, then anything conductive such as a paper clip can be used to make a connection between the two contacts.



After resetting the chip and re-installing the cartridge, the printer display should show the ink level at 100% for the reset cartridge. If not, remove the cartridge and try resetting the chip again. Chips can be reset to full using this method at any time, so even a cartridge that is still showing 75% full, for example, can be refilled and reset prior to a long print run if required.

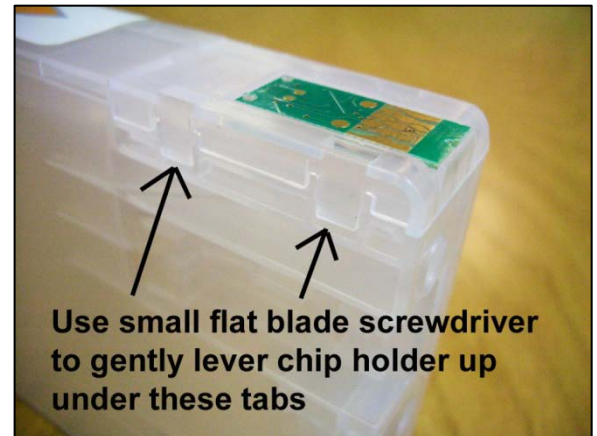
It is very important to always refill a cartridge when resetting a chip. The chip itself is simply a counter that counts the amount of ink that is removed from the cartridge by the printer – the chip has no idea of the actual amount of ink contained in the cartridge. If you don't refill the cartridge to full when resetting the cartridge chip to full, then the ink level on the machine display will be out of sync with the actual ink level in the cartridge, and the cartridge could run dry before the printer display shows it as low or empty.



CHANGING A CHIP ON A CARTRIDGE

Cartridge chips do not have an infinite life and will fail periodically. You can prolong chip life by avoiding touching the gold contact on the chips. A chip failure is indicated by the cartridge not being recognized by the printer after resetting. Replacement chips can be obtained from the supplier where the cartridge kit was purchased.

The chips are supplied mounted on a plastic chip holding plate that snaps into place on the cartridge. To change a cartridge chip, a small flat blade screwdriver is required. Insert the screwdriver under the small tabs on the side of the chip holder and gently lever the chip holder up to un-snap it from the cartridge, as in this picture.



To install the new chip, simply line up the chip holder assembly over the recess in the cartridge and push down on the side of the plastic to snap the new assembly into place. Try to avoid touching the gold contacts on the chip during this operation. After a chip has been changed, it is wise to purchase a new spare chip from your supplier.



USER TIPS

The use of an Ink2image refillable cartridge system is very simple as long as you remember these important points:-

1. Top up the cartridges regularly with ink. Be aware that certain colors will be used more quickly than others depending on what type of printing you do. For instance, the black ink will be used quicker than the other colors if you print a lot of text. Or, if you print mainly photos, then the light cyan and light magenta will run down first. Never let the ink levels drop below 1" from the bottom of the cartridge and don't fill higher than 1" from the top of cartridge.
2. If you do accidentally let a cartridge run dry, refill the cartridge as described above and then perform two to three power cleans to re-prime the printer's ink system with ink. Unfortunately, this will waste ink of the other colors but there is no way round this. It is best to check ink levels regularly and not let a cartridge run dry.
3. When you have finished printing, always turn your printer off.
4. Always try and use your printer at least once a week, even if you only print one small color print. This will keep the ink fresh in the printer's print heads and reduce the chance of clogging or drying out of the inks. If you are not going to use your printer for more than four weeks, then we recommend removing the ink from the cartridges and flushing the printer with cleaning fluid.

Apart from these points, you should use your printer just as you would with normal cartridges and, as long as you follow these simple guidelines, you will enjoy trouble free and cost saving printing.

If you require technical assistance or support with your Ink2image refillable cartridge system, please initially contact the store or dealer where the system was purchased. All Ink2image dealers are well trained in the operation of the system and can help with most problems. Alternatively, contact Ink2image technical support on 1-800-443-9508 or 847-827-0747, or at inquiries@ink2image.com.

30 DAY GUARANTEE TO REPLACE DEFECTIVE PARTS

Ink2image guarantees all parts are defect-free for a period of 30 days from the date that you receive your new Ink2image refillable cartridge system. If you have received a defective part, please initially contact the retailer or dealer from where the system was purchased.

DISCLAIMER

Because Ink2image refillable cartridges are self installed by the user, Ink2image is not responsible for any damages to your printer, whether they are or are not related to the Ink2image refillable cartridge system. Please contact the store or dealer where the printer was purchased, or the printer manufacturer for any problems or questions related to the printer and its operation.

If the Customer chooses to use ink in the system from another manufacturer other than Ink2image, and is not satisfied with the ink, or it clogs the printer or the bulk feed system, it will be the Customers responsibility to pay for the parts to repair the system and restore it to normal usage. We can only guarantee that the Ink2image refillable cartridge system will deliver Ink2image ink just as well as a normal ink cartridge. We will not accept returns of used systems, or systems filled with third party ink that the customer later decides does not meet their specific needs.